

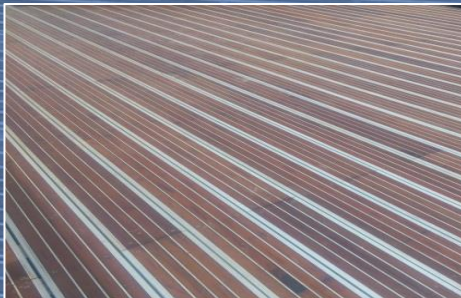
SUPERFLOATS DECK PRODUCTS

WPC, HARDWOOD & AGD

WOOD COMPOSITE



WOOD PLASTIC COMPOSITE
(WPC DECK) 140MM X 25MM



ALUMINIUM GRATING DECK (AGD)
AGD-20/40-WPC

HARDWOOD TIMBER



HARDWOOD TIMBER DECK
BALAU/CHENGAL 140MM X 25MM



ALUMINIUM GRATING DECK (AGD)
AGD-20/40-TIMBER

ALUMINIUM GRATING



ALUMINIUM GRATING



ALUMINIUM GRATING DECK (AGD)
[AGD-20/40-PEBBLE WASH]



ALUMINIUM GRATING DECK (AGD)
[AGD-20/40-EPDM]

SUPERFLOATS DECK PRODUCTS

Superfloats Deck Products offer a wide variety of selections based on the following types of materials or combination of these materials in order to achieve it's optimum usage.

- Wood Plastic Composite (**WPC**)
- Hardwood Timber (**HT**) i.e. Balau, Cengal, etc.
- Aluminium Grating Deck (**AGD**)

Wood Plastic Composite (WPC)

WPC decks are commonly used nowadays as it is not subjected to termite attack and does not warp. Besides it can withstand wide variation in temperature or weather, therefore generally require less maintenance. Cost wise it is cheaper when compare to hardwood timber. However, high pedestrian traffic/usage may wear off the surface of the pattern deck and render it less appealing aesthetically.



**WOOD PLASTIC COMPOSITE
(WPC DECK)**

Hardwood Timber (HT)

Hardwood Timber are relatively much expensive, it is beautiful & the wood texture would remain attractive aesthetically even after worn out due to heavy pedestrian traffic. However, it may be subjected to termite attack & does not receive stains very well, regular staining or applying UV preservative are required i.e. maintenance cost are higher. It is also subjected to warping, splinter, rot or split.



**HARDWOOD TIMBER DECK
BALAU/CHENGAL**

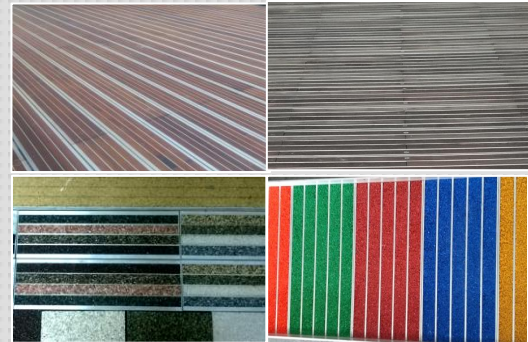
SUPERFLOATS DECK PRODUCTS

Aluminium Grating Deck (AGD)

The recent trend of common usage of people-mover equipments such as buggies car, work-buggies, baggage-buggies onto public deck areas i.e. reception or marina resulted in significantly higher loading being applied onto these decks, higher point load of 4.5kN which is the overall determining load factor are now commonly being spec into most established guidelines, codes of practice or standards.

Aluminium Grating Deck (AGD) is being offered as the A.G.D is able to take 2-3 times higher loading for similar deck thickness of timber /WPC type, it will not splinter or warp easily & extremely weather & slip resistant.

Cladded with WPC or hardwood or pebble wash or even EPDM, depending on your selections, it offers aesthetic pleasing deck surface yet able to take much higher loading in comparison.



**ALUMINIUM GRATING DECK
(AGD)**

Table A : Properties of WPC / Hardwood / AGD in comparison.

Deck Properties	Wood Plastic Composite Deck (WPC)	Hardwood Timber Deck (HT)	Aluminium Grating Deck (AGD)
Strength	Medium	Good	Excellent
Deflection	Medium	Good	Excellent
Material Fatigue / Worn Out	High	Medium	Low
Moisture Resistivity	High	High	High
Density	Light weight (1/2 of aluminium)	Light weight (1/3 of aluminium)	Light weight (1/3 of steel)
Strength to weight ratio	Medium	Good	Excellent
Cost	Low	Medium / High	Medium / High
Maintenance	Medium	High	Low

SUPERFLOATS DECK PRODUCTS

Superfloats offers the following deck products as below:

- i. Wood Plastic Composite (WPC) : WPC-140mm x 25mm
- ii. Aluminium Grating Deck (AGD-WPC) : AGD-20/40-WPC
- iii. Hardwood Timber Deck (HT): Balau/Chengal -140mm x 25mm
- iv. Aluminium Grating Deck (AGD-T) : AGD-20/40-Timber
- v. Aluminium Grating Deck (AGD-PW) : AGD-20/40-Pebble Wash
- vi. Aluminium Grating Desk (AGD-EDDM) : AGD-20/40-EPDM
- vii. Superfloats Aluminium Grating (SAG40) : SAG40-100x30/40

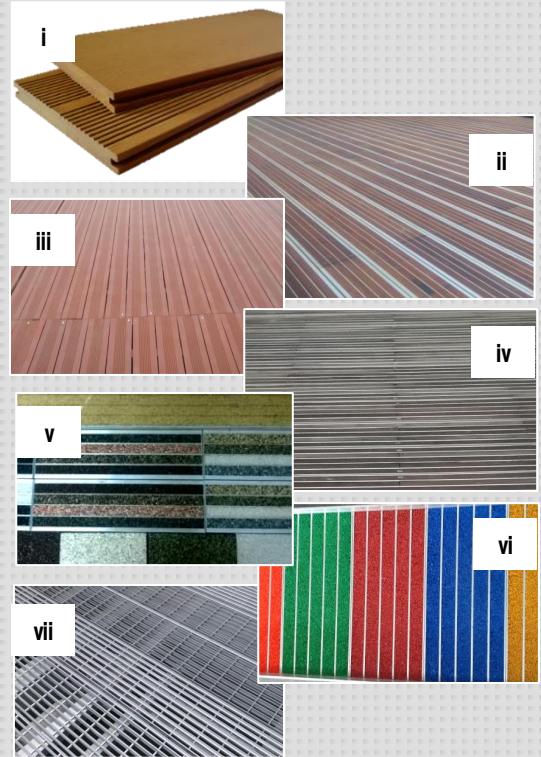

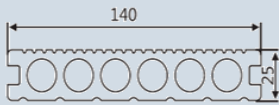

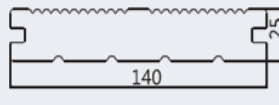
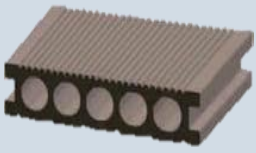
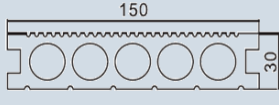

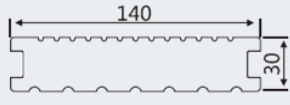


Table B : Recommended span for Superfloats deck products.

Superfloats Deck Product	Thickness (mm)	Recommended Maximum Span (mm)	Aesthetic After Surface Worn	Anti Slip
Wood Plastic Composite (WPC) WPC-140 (w) x 25 (D)	25	300	Low	Medium
Hardwood Timber (HT) HT-140 (w) x 25 (D)	25	350	Good	Medium
Aluminium Grating Deck (AGD-WPC) AGD-20/40-WPC	20/40	400/600	Medium	Good
Aluminium Grating Deck (AGD-T) AGD-20/40-T	20/40	400/600	Good	Good
Aluminium Grating Deck (AGD-PW) AGD-20/40-PW (Pebble Was)	20/40	400/600	Good	Good
Aluminium Grating Deck (AGD-EPDM) AGD-20/40-EPDM	20/40	400/600	Good	Good
Superfloats Aluminium Grating (SAG40) SAG40-100x30/40	40	600	N.A.	Good

WOOD PLASTIC COMPOSITE (WPC)

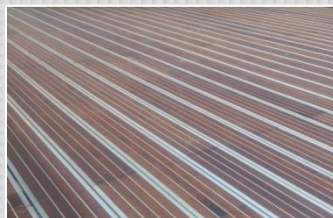
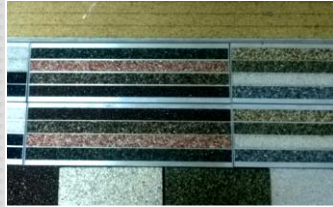
WPC is called newtech wood or engineered wood as it can be tailored made to meet the required need. It is also waterproof & anti-termite, aesthetically pleasing and can be machined easily, thus making installation simple. WPC wood also does not easily warp or deformed and its forms are stable. However relatively, its flexural strength and abrasion resistant are weaker when compared to hardwood timber or AGD (Aluminium Grating Deck).

WPC	Dimensions	Picture	Typical Section
140H25 Round Hole Deck	L: 140mm ; T:25mm		
140S25 Solid Deck	L: 140mm ; T:25mm		
150H30-B Round Hole Deck	L: 150mm ; T:30mm		
140S30-B Solid Deck	L: 140mm ; T:30mm		



ALUMINIUM GRATING DECK (AGD)

~ WHERE A THINNER DECK IS STILL ABLE TO MEET THE STRINGENT LOADING REQUIREMENTS CALLED FOR IN THE CODES ~



Aluminium Grating Deck (AGD) Hardwood / Pebble-Wash / WPC / EPDM

The AGD consists of structural strength Aluminium Grating (20mm thk / 40mm thk) Cladded with selected hardwood / pebble wash / WPC / EPDM patterns, it is able to withstand corrosive environment and is suitable to outdoor or coastal surrounding.

Together with specially-constructed side aluminium section c/w anti-slip surface, it enables easy and flexible fixing and installation at site. It can be sawn to specific shape and size to suit.

With its robust aluminium grating strength, it needs only much lesser thickness to achieve the required strength. It can still able to meet the loading requirements called for in most codes i.e. 5kPa UDL & 4.5kN Concentrated Load over 500mm width.

Technical Data

Element Dimensions : **Thickness 20mm / 40mm**

AGD-C DECK MODELS	SPAN (LENGTH OF BEARING JOIST)							
	600 MM		750 MM		900 MM		450 MM	
	UDL (kN/m ²)	CONC. LOAD (kN)	UDL (kN/m ²)	CONC. LOAD (kN)	UDL (kN/m ²)	CONC. LOAD (kN)	UDL (kN/m ²)	CONC. LOAD (kN)
AGD-T-20	11.4	1.00	7.3	0.80	5.0	0.70	13.6	3.0
AGD-T-40	45.4	4.50	29.1	3.38	20.2	2.82	59.2	5.0

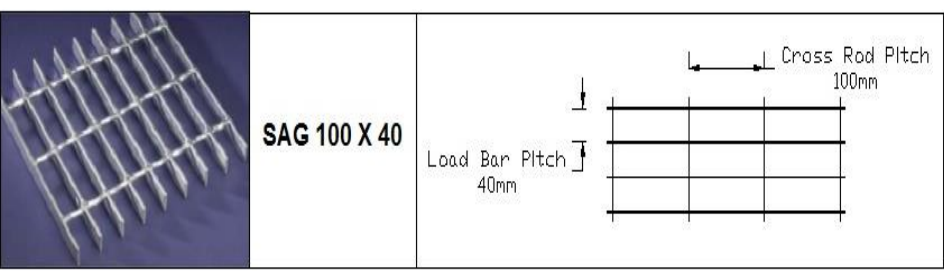
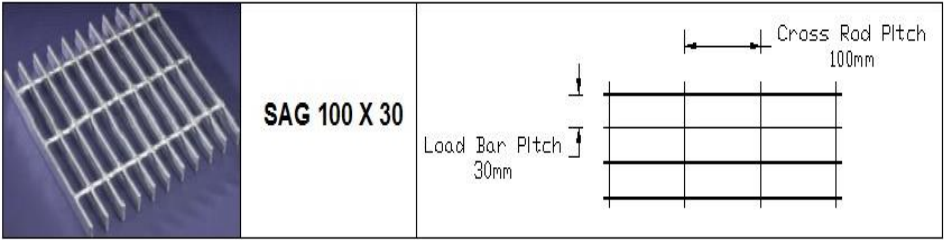
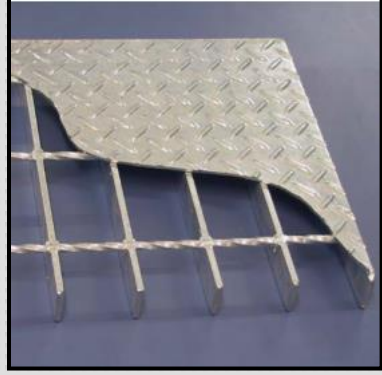
SUPERFLOATS ALUMINIUM GRATING (SAG)

~ ALUMINIUM GRATING PROVIDES ACCESS WHILE BEING INTEGRATED INTO THE OVERALL DESIGN OF THE STRUCTURE ~

The SAG consists of structural strength Aluminium Grating (40mm thk) is suitable for corrosive environment.

SAG recommended where light weight is important and where quality of appearance is paramount. Together with specially-constructed side aluminium section c/w anti-slip surface, it enables easy and flexible fixing and installation at site.

With its robust aluminium grating strength, it needs only much lesser thickness to achieve the required strength.



Product	Bar Size	Mass kg/m ²	U-kP D-mm	Span mm												4kPa 5mm Defl span
				450	600	750	900	1050	1200	1500	1800	2100	2400	2700	3000	
SAG100x40	40x3	9.8	U	82.6	46.5	29.7	20.6	15.2	11.6	7.4	5.2	3.8	2.9	2.3	1.9	1265
			D	1.5	2.7	4.2	6.1	8.3	10.9	17.0	24.5	33.3	43.5	55.1	68.0	
SAG100x30	40x3	12.6	U	107	60.3	38.5	26.7	19.6	14.9	9.9	6.6	4.8	3.6	2.9	1350	
			D	1.5	2.7	4.2	6.1	8.4	10.9	17.1	24.7	33.6	43.9	55.6		

Load Span Table: Superfloats Aluminium Grating



No. 16, Jalan Korporat 5/Ku9, Off Persiaran Hamzah Alang, Taman Perindustrian Meru, 42200 Klang, Selangor, Malaysia.

Phone: +603-3393 3622
 Website: www.superfloats.com
 Email: superfloatsmalaysia@gmail.com

Fax: +603-3393 3772