

# SUPERFLOATS

## FLOTATION PRODUCTS

- WORK BOAT & SPECIAL PONTOON BOAT
- MOBILE WORK PONTOON



### SUPERFLOATS

No.16, Jalan Korporat 5/KU9,  
Off Persiaran Hamzah Alang,  
Taman Perindustrian Meru,  
42200 Klang, Selangor.

Tel: 603-3393 3622

Fax: 603-3393 3772

Email : [superfloatsmalaysia@gmail.com](mailto:superfloatsmalaysia@gmail.com)

Website: [www.superfloats.com](http://www.superfloats.com)

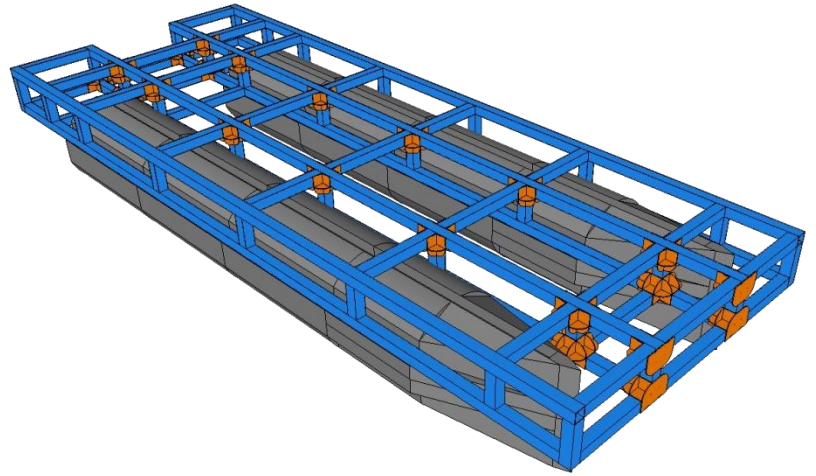


# Mobile Work Pontoon

The mobile work pontoons are particularly practical. The flotation units consist of some combination of the floats drums connected with aluminium frame. It provides reliable flotation for pump pontoons and work pontoons.

This unit is manufactured in sections that allow to create any size of platform depending on the force and buoyancy capacity needed. Numbers and sizes of floaters units are not restricted allowing fitment of large multiple pump set and working area.

\*\* (Work pontoon only, not for navigation)



**Mobile Work Pontoon**

There are optional items such as under bracket support with or without screen, safety railing, attachments anchors or pontoon hoist.



**Mobile Work Pontoon**



**Mobile Work Pontoon with Safety Handrail**



**Mobile Work Pontoon**

# Work Boat & Special Pontoon Boat

The work boat are robustly built with aluminium frame that joined with marine grade superfloats floating drums for higher corrosion resistance in marine, salt or chemical environments.

The pontoon join with a single hull in solid one piece construction. To prevent sinking in the event of fracture, the interior is composed of high-density closed cell polyurethane foam and it is suitable for marine environment.

\*\* (Work pontoon only, not for navigation)



**Workboats**

The special pontoon boats are available in many sizes and are specified especially fit for particular purposes. Such as when hoisting devices (e.g. **mini swivel crane**) or other special devices (e.g. **mini scaffolding**) have to find their place on the boat deck.

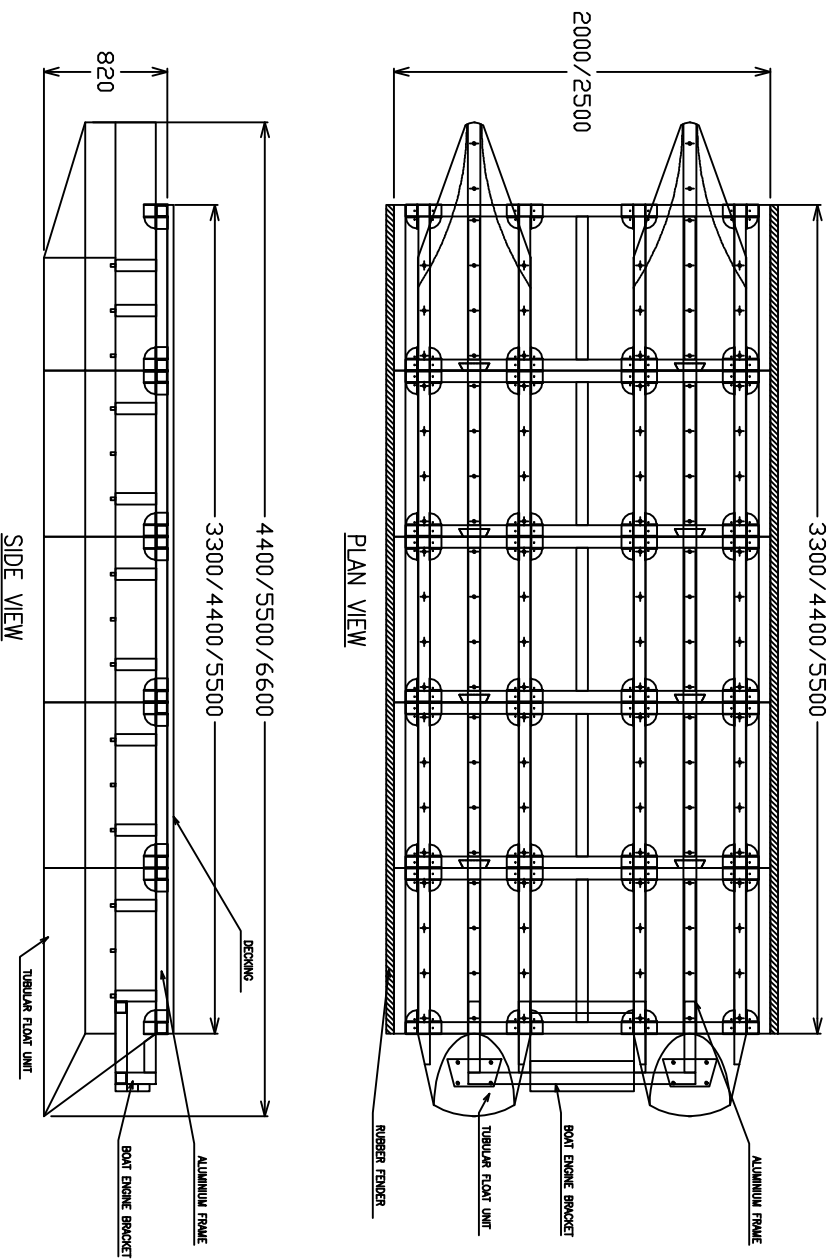


**Special Pontoon Boats**

There are optional items such as under bracket support with or without screen screen, safety railing, attachments anchors or pontoon hoist.

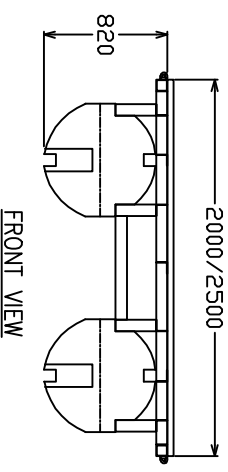
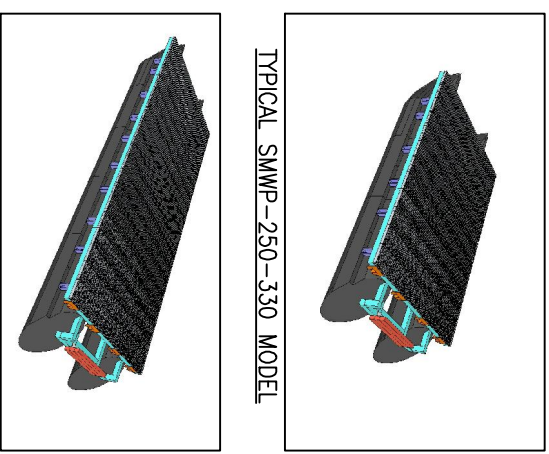


**Workboats with Under Bracket Support, Safety Handrail & Pontoon Hoist**



SUPERFLOATS MWP MODEL	OVERALL DIMENSIONS	DECK DIMENSIONS
SMWP-200-330	4400mm (L) x 2000mm (W) x 820mm (H)	3300mm (L) x 2000mm (W)
SMWP-200-440	5500mm (L) x 2000mm (W) x 820mm (H)	4400mm (L) x 2000mm (W)
SMWP-200-550	6600mm (L) x 2000mm (W) x 820mm (H)	5500mm (L) x 2000mm (W)
SMWP-250-330	4400mm (L) x 2500mm (W) x 820mm (H)	3300mm (L) x 2500mm (W)
SMWP-250-440	5500mm (L) x 2500mm (W) x 820mm (H)	4400mm (L) x 2500mm (W)
SMWP-250-550	6600mm (L) x 2500mm (W) x 820mm (H)	5500mm (L) x 2500mm (W)

SUPERFLOATS MOBILE WORK PONTOON (SMWP) STANDARD SIZES



- NOTE:
- ALL STRUCTURE IS FULLY WELDED ALUMINIUM UNLESS STATED OTHERWISE.
  - ALL ALUMINIUM EXTRUSIONS ARE OF GRADE 6082-T OR EQUIVALENT.
  - FLOATATION UNIT ARE OF MDPE SHELL WITH POLYURETHANE INFILLED.
  - ALL DETAILS ARE INDICATIVE. ALL SIZES & DIMENSIONS ARE IN MILLIMETERS.
  - TYPICAL DRAWING SECTIONS ARE SUBJECT TO FINAL DESIGN.



**WATERSEIDE ENGINEERING SDN BHD (627966-K)**  
 No.16, Jln Korporat 5/KU9, Off postarman Harauzah Alam,  
 Taman Perindustrian Maru, 42200 Klang, Selangor, Malaysia.  
 Tel : 603-3393 3622 Fax : 603-3393 3772

DWG TITLE:

TYPICAL LAYOUT OF SUPERFLOATS  
 MOBILE WORK PONTOON (SMWP)

DRAWN:

WSE

REV:

SMWP-1

SCALE:

N.T.S

DATE:

MAR\_2017