

Other Wastewater

Managing municipal and agricultural wastewater treatment lagoons and tanks.



You are here: UAT Homepage

FLOATATION SYSTEMS

UAT Locations



Head Office

Phone +61 2 6674 2280	Administration PO Box 1618 Kingscliff NSW 2487 AUSTRALIA
Fax +61 2 6674 3380	
Email uat@uat.com.au	Operations 86-88 Chinderah Bay Dr Chinderah NSW 2487 AUSTRALIA
Website www.uat.com.au	

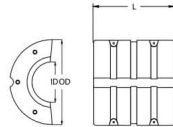
Services

UAT offers a wide range of services for water and waste water management [Read More](#)



Hose Collar

- Made in two sections that can be either bolted or strapped together around the hose or pipe.
- An internal groove enables the fitment of spacers or sleeves to adjust for pipe fitment or compression clamping on the hose while offering a recess location for the hose.
- Floats have the option of polyurethane foam filling.
- Capacity is based on fully submerged float.
- Standard Colour - Orange (*other colours available*)
- Stainless steel nuts, bolts and washers included.
- High impact & UV resistant Polyethylene construction.

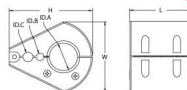
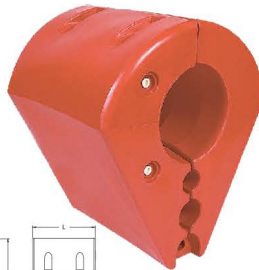


Code	Foam Filled	I/S Diameter (mm)	O/S Diameter x Length (mm)	Capacity (Ltr)	Unit (Kg)
UAT3008	No	570	1300 x 800	850	50
UAT3036	Yes	570	1300 x 800	850	70
UAT3012	No	110	460 x 508	80	8
UAT3034	Yes	110	460 x 508	80	10
UAT3014	No	400	840 x 800	340	25
UAT3035	Yes	400	840 x 800	340	33
UAT3015	No	810	1300 x 800	640	50
UAT3117	Yes	810	1300 x 800	640	66
UAT3016	No	750	1300 x 800	700	50
UAT3017	Yes	750	1300 x 800	700	68
UAT3037	No	90	460 x 508	81	8
UAT3019	Yes	90	460 x 508	81	10
UAT3031	No	500	840 x 800	280	25
UAT3032	Yes	500	840 x 800	280	32
UAT3013	No	300	700 x 600	180	16
UAT3033	Yes	300	700 x 600	180	20

For those special applications when more than one service support is required, we offer the triple hose support float.

This float offers the ability to support multiple combinations of pipes or hoses. Easily assembled around the services with a unique pivot bolting system.

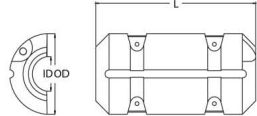
This float has the option of being polyurethane foam filled.



Code	Foam Filled	Inside Dimensions ID.A x ID.B x ID.C (mm)	Outside Dimensions L x W x H (mm)	Capacity (Ltr)	Unit (Kg)
UAT3041	No	270 x 75 x 95	670 x 785 x 600	145	20
UAT3040	Yes	270 x 75 x 95	670 x 785 x 600	145	23

Slurry Collars

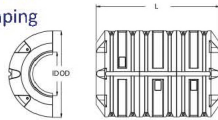
- Shaped float end ensures less drag and streamline profile reduces risk of entanglement.
- Made in two sections that can be either bolted or strapped together around the hose or pipe.
- Adaptable internal urethane spacers that suit hose/pipe diameters from 10mm to 130mm.
- Stainless steel nuts, bolts and washers.
- High impact and UV resistant polyethylene.
- Floats have the option of polyurethane foam filling.
- Capacity is based on fully submerged float.



Code	Foam Filled	I/S Diameter (mm)	O/S Diameter x Length (mm)	Capacity (Ltr)	Unit (Kg)
UAT3010	No	10 - 130	300 x 600	22	4
UAT3009	Yes	10 - 130	300 x 600	22	4.5

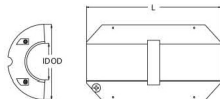
This large slurry collar was designed to offer excellent buoyancy on water and impressive structural strength on land.

This six piece float is easily assembled on site and can handle loads in excess of two tonne if used in a tidal environment. Internal grooves provide location for optional clamping rubbers or pipe locators.



Code	Foam Filled	I/S Diameter (mm)	O/S Diameter x Length (mm)	Capacity (Ltr)	Unit (Kg)
UAT3122	No	710	1400 x 2000	2000	246

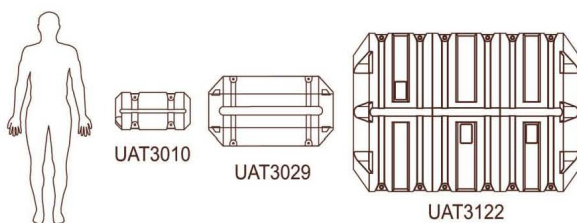
- Made in two sections that can be either bolted or strapped together around the hose or pipe.
- Internal groove enables the fitment of spacers or sleeves to adjust for pipe fitment and restrict movement along the pipe.
- Floats have the option of polyurethane foam filling.
- Capacity is based on fully submerged float.
- Standard colour – Orange.
- *Other colour options are available.*
- Stainless steel nuts, bolts and washers.
- High impact and UV resistant Polyethylene.



Code	Foam Filled	I/S Diameter (mm)	O/S Diameter x Length (mm)	Capacity (Ltr)	Unit (Kg)
UAT3029	No	300	610 x 1100	245	24
UAT3018	Yes	300	610 x 1100	245	30
UAT3020	No	190	610 x 1100	270	25
UAT3026	Yes	190	610 x 1100	270	32
UAT3021	No	250	610 x 1100	250	24
UAT3022	Yes	250	610 x 1100	250	30

Scale Key:

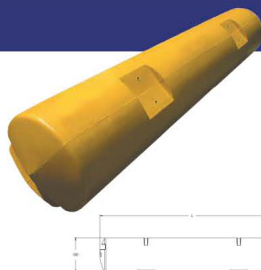
Size of three floats in comparison to 6FT (183cm) person.



Pipeline Floats

This float is designed to be used either individually or in a tandem formation supporting the pipe or hose.

The tandem floats are positioned with the use of two polyethylene moulded saddles located at each end to maintain a rigid platform and support the pipe.

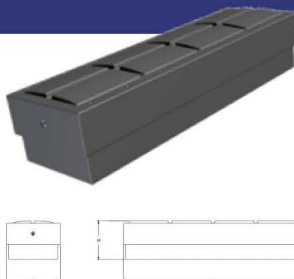


Code	Foam Filled	I/S Diameter (mm)	O/S Diameter x Length (mm)	Capacity (Ltr)	Unit (Kg)
UAT3027	No	n/a	500 x 2700	530	35
UAT3028	Yes	n/a	500 x 2700	530	48
UAT3042	Pipeline Float Saddle (Sm)				
UAT3030	Pipeline Float Saddle (Lg)				

Pontoon Floats

This float was originally designed to support an environmental gas collection cover above a sewage treatment pond.

The flexibility of the design permits the attachment of decking, fabric and beams to the float for all your buoyancy requirements. For additional security the float can be foam filled.



Code	Foam Filled	Dimensions: L x W x H (mm)	Capacity(Ltr)	Unit(Kg)
UAT3024	No	2400 x 710 x 510	800	40

