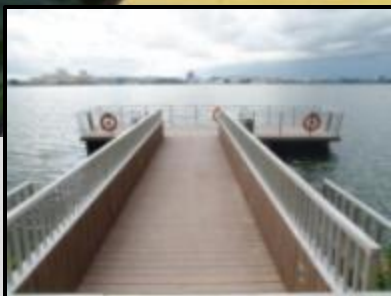




MARINAS, PONTOONS, FLOATING SOLUTIONS



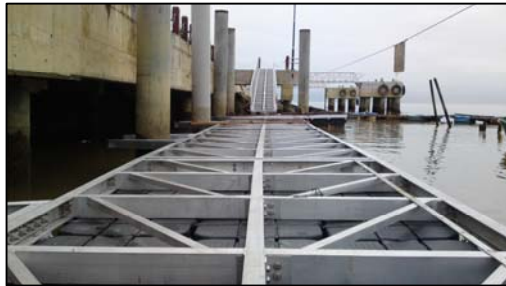
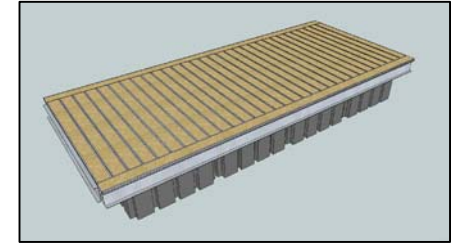
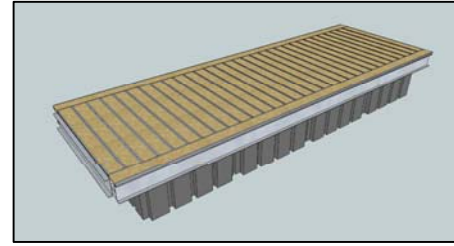
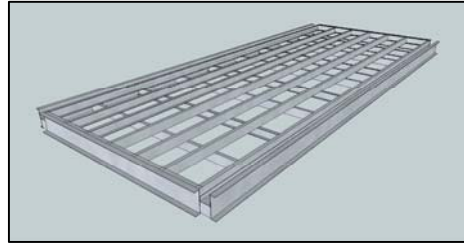
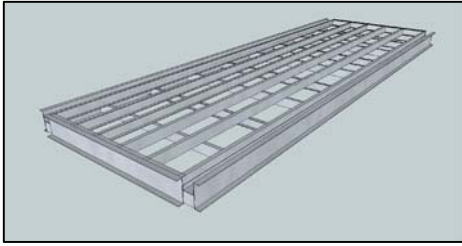
Super floats Aluminium Lattice (SAL) Frame



FEATURES :

- MARINE GRADE ALUMINIUM 6082
- STANDARD LATTICE FRAME LENGTH OF I.E. 6M, 12M & 18M
- VARIES LATTICE FRAME WIDTH AVAILABLE
- MODULAR CONSTRUCTION, MORE WIDTH CAN BE ACHIEVED WITH MULTIPLES OF ABOVE.
- DECKING OPTION
 - ALUM. GRATING DECK C/W PEBBLE WASH
 - ALUM. GRATING DECK C/W HARDWOOD CLADDED
 - HARDWOOD BALAU
 - CUSTOM I.E COMPOSITE TIMBER
- STANDARD CONNECTION WITH HINGES. CUSTOM CONNECTIONS OPTION AVAILABLE.

SUPERFLOATS ALUMINIUM LATTICE (SAL) FRAME



Features:

- Marine Grade Aluminium 6082
- Standard Lattice Frame length of i.e. 6m, 12m & 18m
- Varies Lattice Frame Widths available i.e. 38mm; 5mm etc.
- Modular construction, more width can be achieved with multiples of above.
- Decking Option
Alum. Grating Deck c/w pebble wash.
Alum. Grating Deck c/w hardwood cladded.
Hardwood balau 25mm; 20mm.
Custom i.e. composite timber.
- Standard Connection with hinges.
Custom connections option available.

STANDARD SAL FRAME

MODEL	DIMENSIONS	MATERIALS
SAL-S-1060	1.0m x (W) x 5.85m (L)	AL 6082
SAL-S-1560	1.5m x (W) x 5.85m (L)	AL 6082
SAL-S-2060	2.0m x (W) x 5.85m (L)	AL 6082
SAL-S-2560	2.5m x (W) x 5.85m (L)	AL 6082
SAL-S-10120	1.0m x (W) x 11.7m (L)	AL 6082
SAL-S-15120	1.5m x (W) x 11.7m (L)	AL 6082
SAL-S-20120	2.0m x (W) x 11.7m (L)	AL 6082
SAL-S-25120	2.5m x (W) x 11.7m (L)	AL 6082



Superfloats Aluminium Truss (SAT) Frame



FEATURES :

- MARINE GRADE ALUMINIUM 6082
- STANDARD TRUSS FRAME LENGTH OF I.E. 6M, 12M & 18M
- VARIES TRUSS FRAME HEIGHT AVAILABLE I.E. 1M, 0.5M, 0.7M, 0.35M
- MODULAR CONSTRUCTION, MORE WIDTH CAN BE ACHIEVED WITH MULTIPLES OF ABOVE.
- DECKING OPTION
 - ALUM. GRATING DECK C/W PEBBLE WASH
 - ALUM. GRATING DECK C/W HARDWOOD CLADD
 - HARDWOOD BALAU
 - CUSTOM I.E OPOSITE TIMBER
- STANDARD CONNECTION WITH HINGES. CUSTOM CONNECTIONS OPTION AVAILABLE.

SUPERFLOATS ALUMINIUM TRUSS (SAT) FRAME

Features:

Marine Grade Aluminium 6082

Standard Truss Frame length of
i.e. 6m, 12m & 18m

Varies Truss Frame Widths available
i.e. 38mm; 5mm etc.

Modular construction, more width can be achieved
with multiples of above.

Decking Option

- Alum. Grating Deck c/w pebble wash.
- Alum. Grating Deck c/w hardwood cladded.
- Hardwood Balau 25mm; 9mm.
- Custom i.e. composite timber.

Standard Connection with hinges. Custom connections option available.



SAT-350-2560



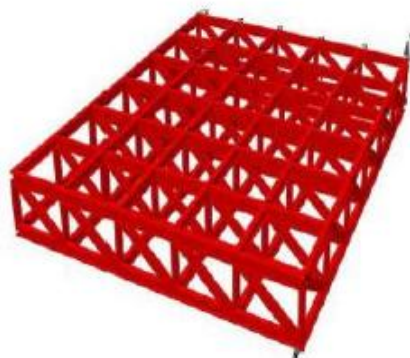
SAT-750-2060



SAT-1100-2060



SAT-350-2060



MODEL	DIMENSIONS	MATERIALS
SAT-S350-1060	1.0m x (W) x 6.0m (H)	AL 6082
SAT-S350-1560	1.5m x (W) x 6.0m (H)	AL 6082
SAT-S350-2060	2.0m x (W) x 6.0m (H)	AL 6082
SAT-S350-2560	2.5m x (W) x 6.0m (H)	AL 6082
SAT-S350-10120	1.0m x (W) x 12.0m (H)	AL 6082
SAT-S350-15120	1.5m x (W) x 12.0m (H)	AL 6082
SAT-S350-20120	2.0m x (W) x 12.0m (H)	AL 6082
SAT-S350-25120	2.5m x (W) x 12.0m (H)	AL 6082

MODEL	DIMENSIONS	MATERIALS
SAT-S1100-1060	1.0m x (W) x 6.0m (H)	AL 6082
SAT-S1100-1560	1.5m x (W) x 6.0m (H)	AL 6082
SAT-S1100-2060	2.0m x (W) x 6.0m (H)	AL 6082
SAT-S1100-2560	2.5m x (W) x 6.0m (H)	AL 6082
SAT-S1100-10120	1.0m x (W) x 12.0m (H)	AL 6082
SAT-S1100-15120	1.5m x (W) x 12.0m (H)	AL 6082
SAT-S1100-20120	2.0m x (W) x 12.0m (H)	AL 6082
SAT-S1100-25120	2.5m x (W) x 12.0m (H)	AL 6082

MODEL	DIMENSIONS	MATERIALS
SAT-S750-1060	1.0m x (W) x 6.0m (H)	AL 6082
SAT-S750-1560	1.5m x (W) x 6.0m (H)	AL 6082
SAT-S750-2060	2.0m x (W) x 6.0m (H)	AL 6082
SAT-S750-2560	2.5m x (W) x 6.0m (H)	AL 6082
SAT-S750-10120	1.0m x (W) x 12.0m (H)	AL 6082
SAT-S750-15120	1.5m x (W) x 12.0m (H)	AL 6082
SAT-S750-20120	2.0m x (W) x 12.0m (H)	AL 6082
SAT-S750-25120	2.5m x (W) x 12.0m (H)	AL 6082

Aluminium Gangway



FEATURES :

- MARINE GRADE ALUMINIUM 6082
- DESIGN A LIVE LOAD OF 4KN/M^2 (4KPA)
- DECKING OPTION
 - ALUM. GRATING DECK C/W PEBBLE WASH
 - ALUM. GRATING DECK C/W HARDWOOD CLADDED
 - HARDWOOD BALAU
 - CUSTOM I.E COMPOSITE TIMBER, ALUM. THREAD PLATE





Model No.	Description	Overall Dimensions	Decking Option
SAGWO 12045	Aluminium Gangway, hinges on one side, rollers on the other side c/w 700mm Alum. Thread Plate.	1.2m x 4.5m Clear width:	i) Alum. Chequered Plate
			ii) Composite Timber
SAGWO 12060	Aluminium Gangway, hinges on one side, rollers on the other side c/w 700mm Alum. Thread Plate.	1.2m x 6.0m Clear width:	i) Alum. Chequered Plate
			ii) Composite Timber
SAGWO 12090	Aluminium Gangway, hinges on one side, rollers on the other side c/w 700mm Alum. Thread Plate.	1.2m x 9.0m Clear width:	i) Alum. Chequered Plate
			ii) Composite Timber
SAGWO 12120	Aluminium Gangway, hinges on one side, rollers on the other side c/w 700mm Alum. Thread Plate.	1.2m x 12.0m Clear width:	i) Alum. Chequered Plate
			ii) Composite Timber
SAGWO 12150	Aluminium Gangway, hinges on one side, rollers on the other side c/w 700mm Alum. Thread Plate.	1.2m x 15.0m Clear width:	i) Alum. Chequered Plate
			ii) Composite Timber
SAGWO 12180	Aluminium Gangway, hinges on one side, rollers on the other side c/w 700mm Alum. Thread Plate.	1.2m x 18.0m Clear width:	i) Alum. Chequered Plate
			ii) Composite Timber
SAGWO 15045	Aluminium Gangway, hinges on one side, rollers on the other side c/w 700mm Alum. Thread Plate.	1.5m x 4.5m Clear width:	i) Alum. Chequered Plate
			ii) Composite Timber
SAGWO 15060	Aluminium Gangway, hinges on one side, rollers on the other side c/w 700mm Alum. Thread Plate.	1.5m x 6.0m Clear width:	i) Alum. Chequered Plate
			ii) Composite Timber
SAGWO 15090	Aluminium Gangway, hinges on one side, rollers on the other side c/w 700mm Alum. Thread Plate.	1.5m x 9.0m Clear width:	i) Alum. Chequered Plate
			ii) Composite Timber
SAGWO 15120	Aluminium Gangway, hinges on one side, rollers on the other side c/w 700mm Alum. Thread Plate.	1.5m x 12.0m Clear width:	i) Alum. Chequered Plate
			ii) Composite Timber
SAGWO 15150	Aluminium Gangway, hinges on one side, rollers on the other side c/w 700mm Alum. Thread Plate.	1.5m x 15.0m Clear width:	i) Alum. Chequered Plate
			ii) Composite Timber
SAGWO 15180	Aluminium Gangway, hinges on one side, rollers on the other side c/w 700mm Alum. Thread Plate.	1.5m x 18.0m Clear width:	i) Alum. Chequered Plate
			ii) Composite Timber
SAGWO 18045	Aluminium Gangway, hinges on one side, rollers on the other side c/w 700mm Alum. Thread Plate.	1.8m x 4.5m Clear width:	i) Alum. Chequered Plate
			ii) Composite Timber
SAGWO 18060	Aluminium Gangway, hinges on one side, rollers on the other side c/w 700mm Alum. Thread Plate.	1.8m x 6.0m Clear width:	i) Alum. Chequered Plate
			ii) Composite Timber
SAGWO 18090	Aluminium Gangway, hinges on one side, rollers on the other side c/w 700mm Alum. Thread Plate.	1.8m x 9.0m Clear width:	i) Alum. Chequered Plate
			ii) Composite Timber
SAGWO 18120	Aluminium Gangway, hinges on one side, rollers on the other side c/w 700mm Alum. Thread Plate.	1.8m x 12.0m Clear width:	i) Alum. Chequered Plate
			ii) Composite Timber
SAGWO 18150	Aluminium Gangway, hinges on one side, rollers on the other side c/w 700mm Alum. Thread Plate.	1.8m x 15.0m Clear width:	i) Alum. Chequered Plate
			ii) Composite Timber
SAGWO 18180	Aluminium Gangway, hinges on one side, rollers on the other side c/w 700mm Alum. Thread Plate.	1.8m x 18.0m Clear width:	i) Alum. Chequered Plate
			ii) Composite Timber





Model No.	Description	Overall Dimensions	Decking Option
SAGWC 18090	Aluminium Gangway, hinges on one side, rollers on the other side c/w 700mm Alum. Thread Plate.	1.8m x 9.0m Clear width:	i) Alum. Chequered Plate ii) Composite Timber
SAGWC 18120	Aluminium Gangway, hinges on one side, rollers on the other side c/w 700mm Alum. Thread Plate.	1.8m x 12.0m Clear width:	i) Alum. Chequered Plate ii) Composite Timber
SAGWC 18150	Aluminium Gangway, hinges on one side, rollers on the other side c/w 700mm Alum. Thread Plate.	1.8m x 15.0m Clear width:	i) Alum. Chequered Plate ii) Composite Timber
SAGWC 18180	Aluminium Gangway, hinges on one side, rollers on the other side c/w 700mm Alum. Thread Plate.	1.8m x 18.0m Clear width:	i) Alum. Chequered Plate ii) Composite Timber
SAGWC 18210	Aluminium Gangway, hinges on one side, rollers on the other side c/w 700mm Alum. Thread Plate.	1.8m x 21.0m Clear width:	i) Alum. Chequered Plate ii) Composite Timber
SAGWC 18240	Aluminium Gangway, hinges on one side, rollers on the other side c/w 700mm Alum. Thread Plate.	1.8m x 24.0m Clear width:	i) Alum. Chequered Plate ii) Composite Timber
SAGWC 18270	Aluminium Gangway, hinges on one side, rollers on the other side c/w 700mm Alum. Thread Plate.	1.8m x 27.0m Clear width:	i) Alum. Chequered Plate ii) Composite Timber
SAGWC 18300	Aluminium Gangway, hinges on one side, rollers on the other side c/w 700mm Alum. Thread Plate.	1.8m x 30.0m Clear width:	i) Alum. Chequered Plate ii) Composite Timber



Composite Timber Decking

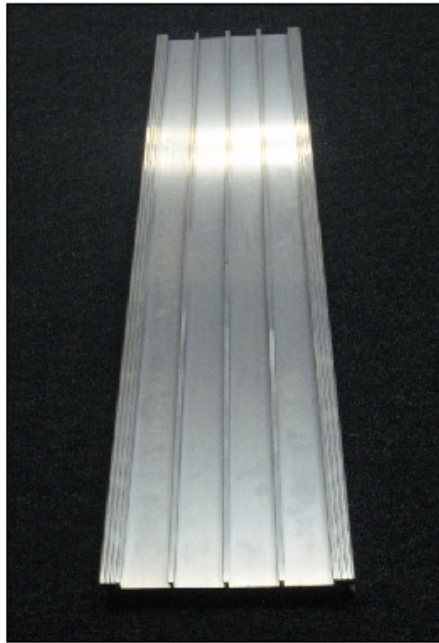


➤ Timber Deck are used extensively for marina / jetty structures. It is aesthetically pleasing and quite lasting if hardwood such as Chengal / Balau are used.

➤ The Aluminium Grating Deck (AGD) consist of structural strength Aluminium Grating (40mm THK) Cladded with selected shanghai plaster pebble wash patterns, it is able to withstand corrosive environment and is suitable to outdoor or coastal surrounding.

AGD-C DECKING





AGD-C Cladded Deck (Aluminium Grating Deck)

~ where a thinner deck is still able to meet the stringent loading requirements called for in the codes ~

Cladded Aluminium Grating Deck (AGD-C) w Pebble-Wash Shanghai Plastered

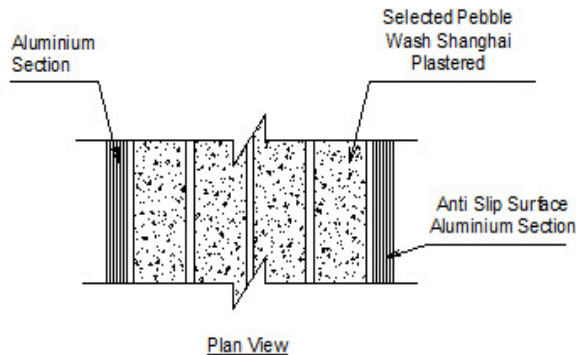
The AGD-C-40 consists of structural strength Aluminium Grating (40mm thk) Cladded with selected shanghai plaster pebble wash patterns, it is able to withstand corrosive environment and is suitable to outdoor or coastal surrounding.

Together with specially-constructed side aluminium section c/w anti-slip surface, it enables easy and flexible fixing and installation at site. It can be sawn to specific shape and size as required.

With its robust aluminium grating strength, it needs only much lesser thickness to achieve the required strength. It can still able to meet the loading requirements called for in most codes i.e. 5kPa UDL & 4.5kN Concentrated Load over 390mm width.

Technical Data

Element Dimensions : **Thickness 40mm**
 Material : Shanghai Plaster Pebble Wash- Selected Patterns
 Aluminium - Grade 6063



AGD-C DECK 40 MODELS	SPAN (LENGTH OF BEARING JOIST)							
	600 MM		750 MM		900 MM		1050 MM	
	UDL (kN/m ²)	CONC. LOAD (kN)	UDL (kN/m ²)	CONC. LOAD (kN)	UDL (kN/m ²)	CONC. LOAD (kN)	UDL (kN/m ²)	CONC. LOAD (kN)
AGD-C-40	45.4	4.50	29.1	3.38	20.2	2.82	14.8	2.41

Load Span Table : AGD 40 Models

Note : Another model of AGD-T-40 is available with Timber Cladded option for excellent texture allure. The strength of Timber Cladded Option shall remain unchanged as the strength is derived from Aluminium Grating.

Note : Depending on Aesthetic, weight or enhanced stability requirements, it can come with pebble wash or hardwood timber strip.

Pile Guide

Design to allow full vertical movement of the pontoon, and shall minimize any damage to the pontoon or piling caused by movement throughout the fluctuations in water elevation.

FEATURES :

- Marine Grade Aluminium 6082.
- Robust Nylon Rollers.
- Optional Fender Edge.
- Optional Double Layer truss Section.



Bollard/Cleats



➤ BOLLARD BUILT OF STAINLESS STEEL TO WITHSTAND THE RIGORS OF BOAT MOORING DUTIES IN FRESH OR SALT WATER. 6" DIAMETER.

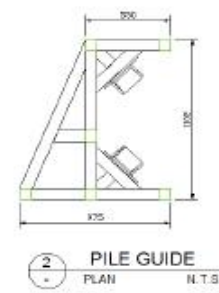
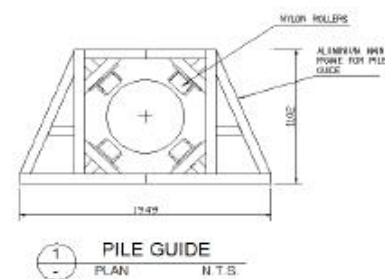
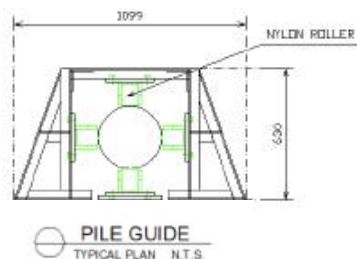
➤ CAST ALUMINIUM CLEATS ARE MADE OF A NON-CORROSIVE ALLOY WHICH GIVES A LONG LIFE EVEN IN SALTWATER. DIMENSION 12".



SUPERFLOATS PILE GUIDE

FEATURES:

- Marine Grade Aluminium 6082
- Optional Fender Edge
- Robust Nylon Roller



MODEL	PILE DIAMETER	MATERIALS
PG - S - 225	225 MM	AL 6082
PG - S - 300	300 MM	AL 6082
PG - S - 375	375 MM	AL 6082
PG - S - 450	450 MM	AL 6082

MODEL	PILE DIAMETER	MATERIALS
PG - M - 450	450 MM	AL 6082
PG - M - 500	500 MM	AL 6082
PG - M - 600	600 MM	AL 6082
PG - M - SP	CUSTOM	AL 6082

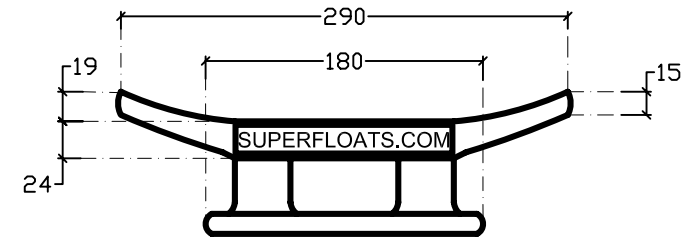




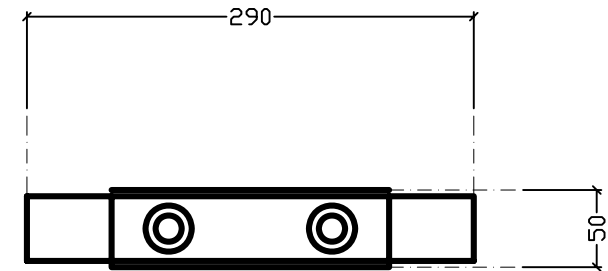
FEATURES:

- CLEATS SHALL BE CAST-ALUMINIUM OF 12" IN SIZE.
- ALL FASTENERS ARE CORROSION RESISTANT STAINLESS STEEL ; BOLT SIZE M10

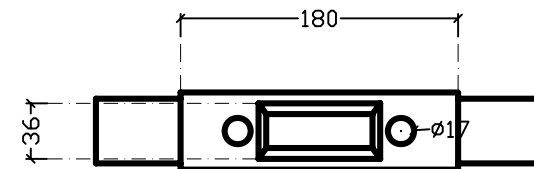
MODEL	DESCRIPTION	DIMENSION
SCA - 12	Cast aluminium cleats.	12 " As per dwg



1 BOAT CLEAT
- DETAIL SCALE 1:5

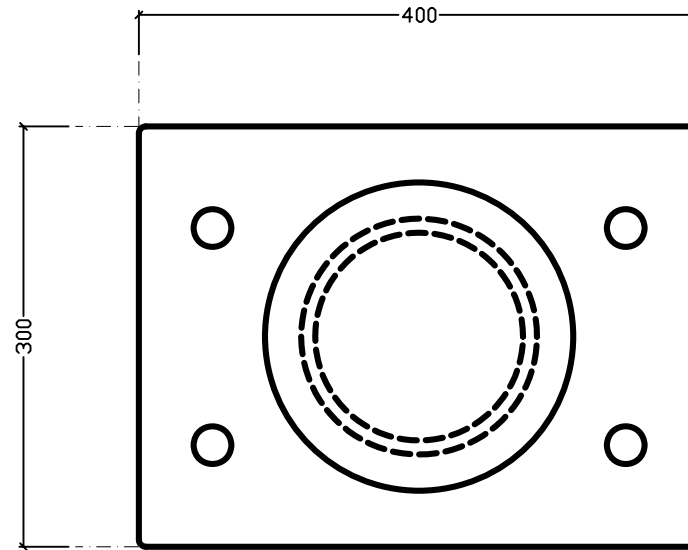


A BOAT CLEAT
- PLAN SCALE 1:5



B BOAT CLEAT
- BOTTOM SCALE 1:5

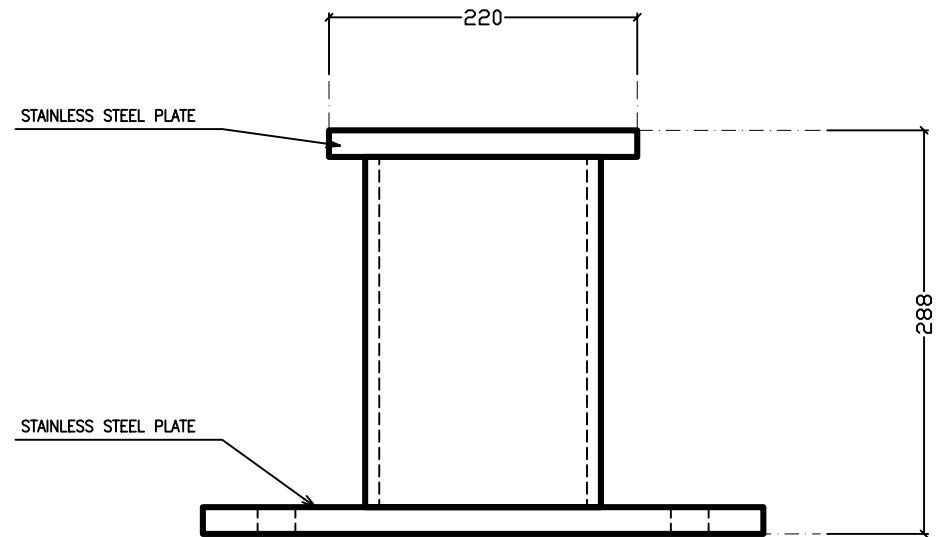




FEATURES:

- ALL MATERIAL IS STAINLESS STEEL.
- ALL FASTENERS ARE CORROSION RESISTANT STAINLESS STEEL ; BOLT SIZE M24

MODEL	DESCRIPTION	DIMENSION
SSS - 6	Stainless steel bollard 6" Ø diameter	As per dwg





Service Pedestal

FEATURES:

- 240V ELECTRICAL SERVICE, 32 AMPS.
- WATERPROOF SURFACE MOUNT SOCKET (IP 67)
- ALUMINIUM ENCLOSURE.
- 32 AMPS ISOLATOR C/W BOX & COVER (IP 56)

FEATURES:

- HIGH QUALITY MARINE RUBBER FENDER.
- SECURED BY STAINLESS STEEL BOLTING.
- ALL FASTENERS SUCH AS NUTS, BOLTS AND SCREWS ARE PROTECTED AGAINST ACCIDENTAL LOOSENING.

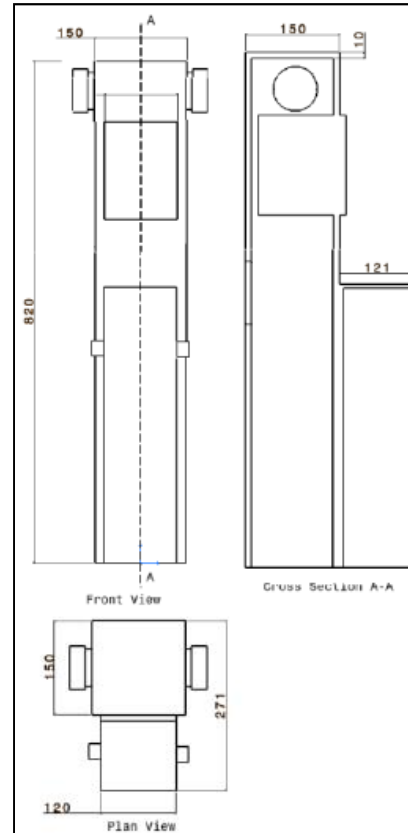
Rubber Fender



SERVICE PEDESTAL

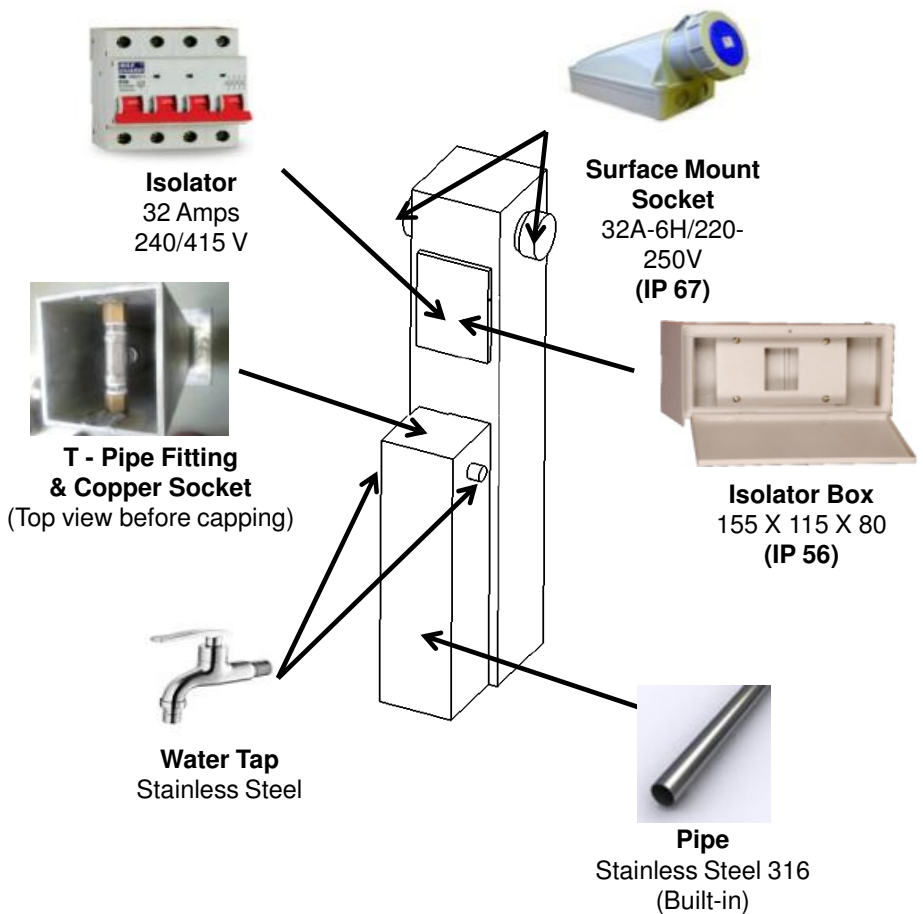
Features:

- Height 820mm up to 1000mm available
- 240V Electrical Service, 32 Amps.
- 2 pieces Waterproof Surface Mount Socket with Spring Loaded Cover to Protect Against Water and Dirt Ingress when not in use. (IP 67)
- Custom Design Available up to 4 pieces Surface Mount Socket.
- Factory Wired.
- 32 Amps isolator c/w Box (IP 56)
- Water Servives 1/2" up to 2"
- 2 pieces of 1/2" Stainless Steel Water Tab
- Marine Grade Aluminium 6082 and Stainless Steel 316.
- The options are a power supply version, water supply version and combination version



MODEL

SFCP-150125-820



DESCRIPTION

Combine of Power Pedestal - 2pc of 32amps Waterproof Surface Mount Socket (P67) and Isolator c/w Box (IP56) and Water Pedestal - 2 pieces of 1/2" Stainless Steel Water Tab and built in with Stainless Steel 316 pipe.

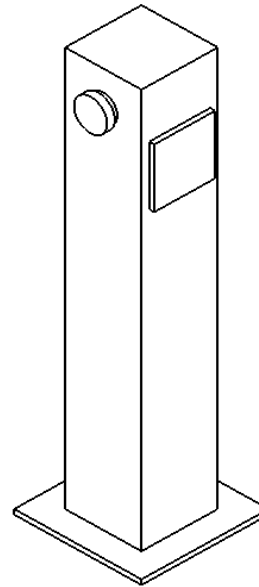
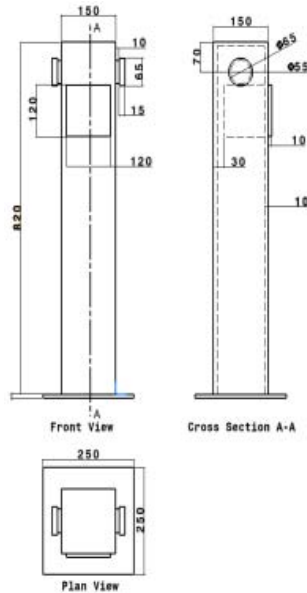
DIMENSIONS

820mm x 150mm x 275mm

POWER PEDESTAL

Features:

- Height 820mm up to 1000mm available
- 240V Electrical Service, 32 Amps.
- 2 pieces Waterproof Surface Mount Socket with Spring Loaded Cover to Protect Against Water and Dirt Ingress when not in use. (IP 67)
- Custom Design Available up to 4 pieces Surface Mount Socket.
- Marine Grade Aluminium 6082.
- Factory Wired.
- 32 Amps isolator c/w Box (IP 56)
- The options are a power supply version, water supply version and combination version.



Combination Version



SFPP-150150-820



Surface Mount Socket
32A-6H/220-250V
(IP 67)



Isolator Box
155 X 115 X 80
(IP 56)



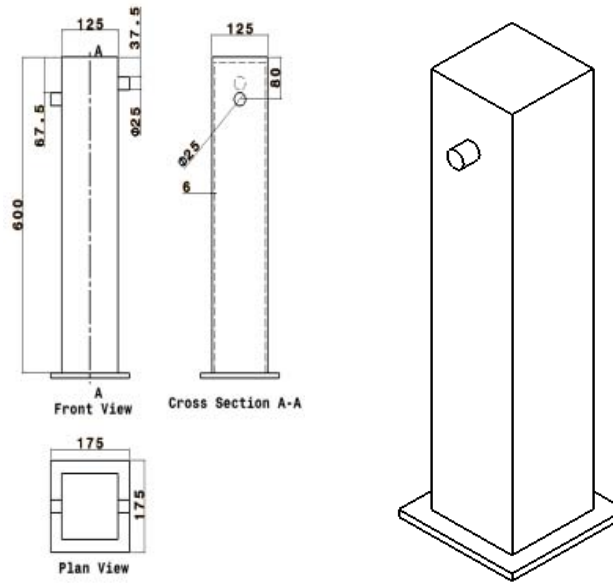
Isolator
32 Amps
240/415 V

MODEL	DESCRIPTION	DIMENSIONS
SFPP-150150-820	Power Pedestal with 2pc of 32amps Waterproof Surface Mount Socket (P67) and Isolator c/w Box (IP56)	820mm x 150mm x 150mm

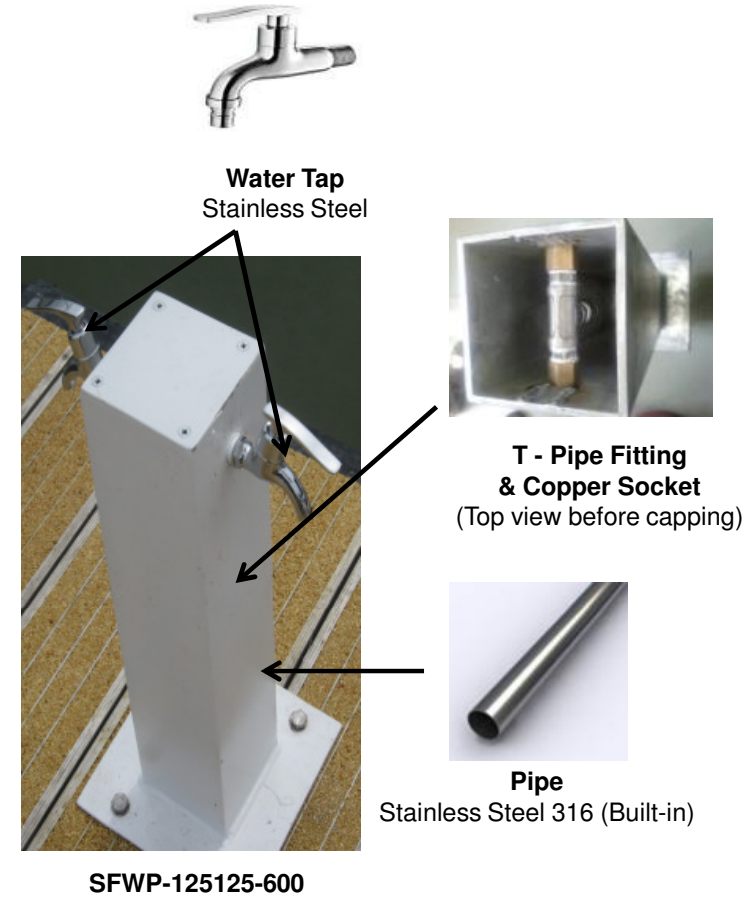
WATER PEDESTAL

Features:

- Height 600mm up to 1000mm available
- Water Servives 1/2" up to 2"
- 2 pieces of 1/2" Stainless Steel Water Tab
- Custom Design Available
- Marine Grade Aluminium 6082 and Stainless Steel 316.
- The options are a power supply version, water supply version and combination version.



Combination Version



SFWP-125125-600

MODEL

SFWP-125125-600

DESCRIPTION

Water Pedestal with 2 pieces of 1/2" Stainless Steel Water Tab and built in with Stainless Steel 316 pipe.

DIMENSIONS

600mm x 125mm x 125mm