

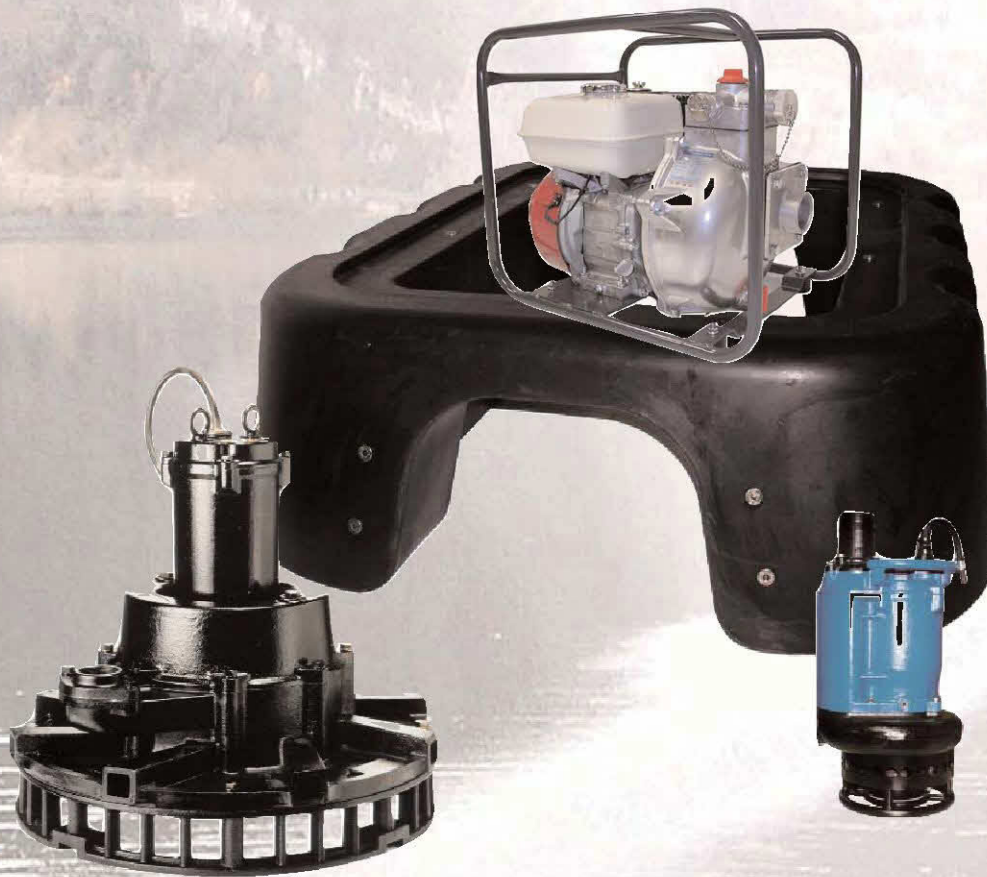
MULTIPURPOSE FLOAT SET

For ENGINE DRIVEN PUMPS, SUBMERSIBLE PUMPS, SURFACE PUMPS, SUBMERGED AGITATORS, SURFACE or SUBMERSIBLE AERATORS.



The float SET 001 CE2A has been conceived in order to use any kind of submersible pumps, engine driven pumps, aerators, agitators on top of any kind of liquid surfaces : swimming pools, lagoons, lakes, rivers, retention basins, sea,...

The floatable capacity per unit is off 100 liters, which means 100 kg for any kind of surface pumps and more than 100 kg for all other submerged machinery.



APPLICATIONS :

- **FLOODS** : Engine driven pumps to become floating.
- **FOREST FIRE** : by putting the fire fighting engine pumps with the float set on swimming pool, river, lake, basin surface,...
- **LAGOONS or RETENTION BASINS** : bottoms of artificial lagoons are made of a geotextil membrane and by hanging above this membrane, submersible pump, aerator or agitator at the FLOAT SET, it is possible to extract sludges or sediment or to deodorize the lagoon.
- **MINE, STONES AND SAND QUARRIES** : in very narrow spaces where pump can be installed only on water surface to get a complete dewatering.
- **POLLUTED TABLE** : to eliminate all polluted products like oil on water surfaces.
- **RIVER, LAKE, SEA** : to pump water as closest as possible from the surface.

MULTIPURPOSE FLOAT SET

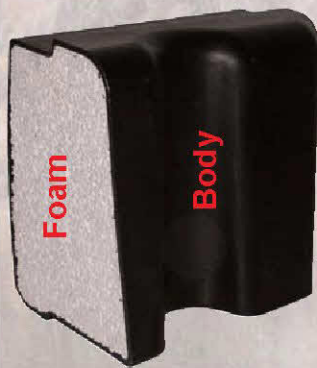
MANUFACTURING :

The body is made of moulded polyethylen. The thickness is off 6 to 7 mm. The body has a very good impact and abrasive resistance. The polyethylen material is resistant to main chemical products and oil. The FLOAT SET is also resistant to U.V. rays.

The FLOAT SET is UNSINKABLE : the body is completely filled inside of a special polyester foam make up of closed cells and very light density.



Polyfused caps to fill the foam.



The components used in the manufacturing of the FLOAT SET are 100 % recyclable and respect the environment.

DESIGN et ASSEMBLY :

The design has been made :

- to allow a very easy combination with any kind of pumps ;
- to be larger in the bottom on all sides to get a greater stability on the water ;
- to be reinforced in its length by a wave shape ;
- to allow a piling of the FLOAT SETS over each other and increase the floatable capacity by multiple of 100 liters. Shapes on top and bottom are designed in order that float sets can be built in each other and fixed by mean of iron plates.

IT IS POSSIBLE TO GET AS MUCH 100 L FLOATABLE CAPACITY AS NUMBER OF ASSEMBLED FLOAT-SETS.



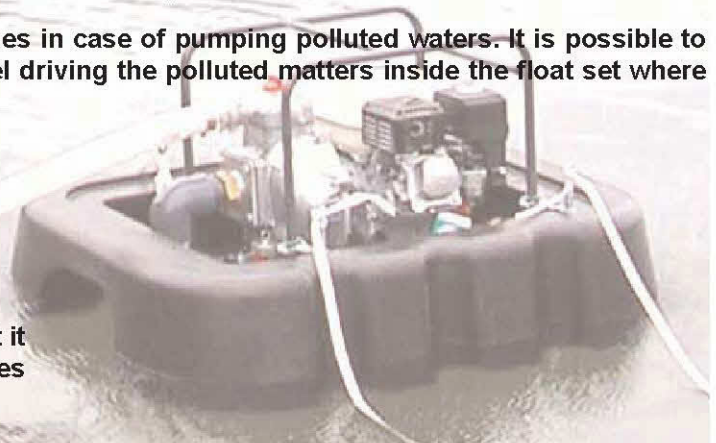
Configuration for 200 kg of floatability

- to allow to place float sets side by side and have a platform on top in wood or steel.

The FLOAT SET has two passages in the smallest sides in case of pumping polluted waters. It is possible to screw two inclined vertical plates making like a funnel driving the polluted matters inside the float set where they are pumped in the surface.

HANDINESS :

- The FLOAT SET is very light : less than 10 kg.
- With any kind of fixing system and the use of eyebolt it is possible to fasten the float set with cables or ropes anywhere on the water surface.

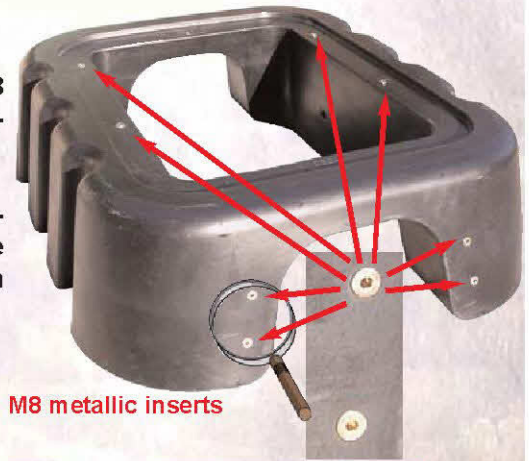


MULTIPURPOSE FLOAT SET

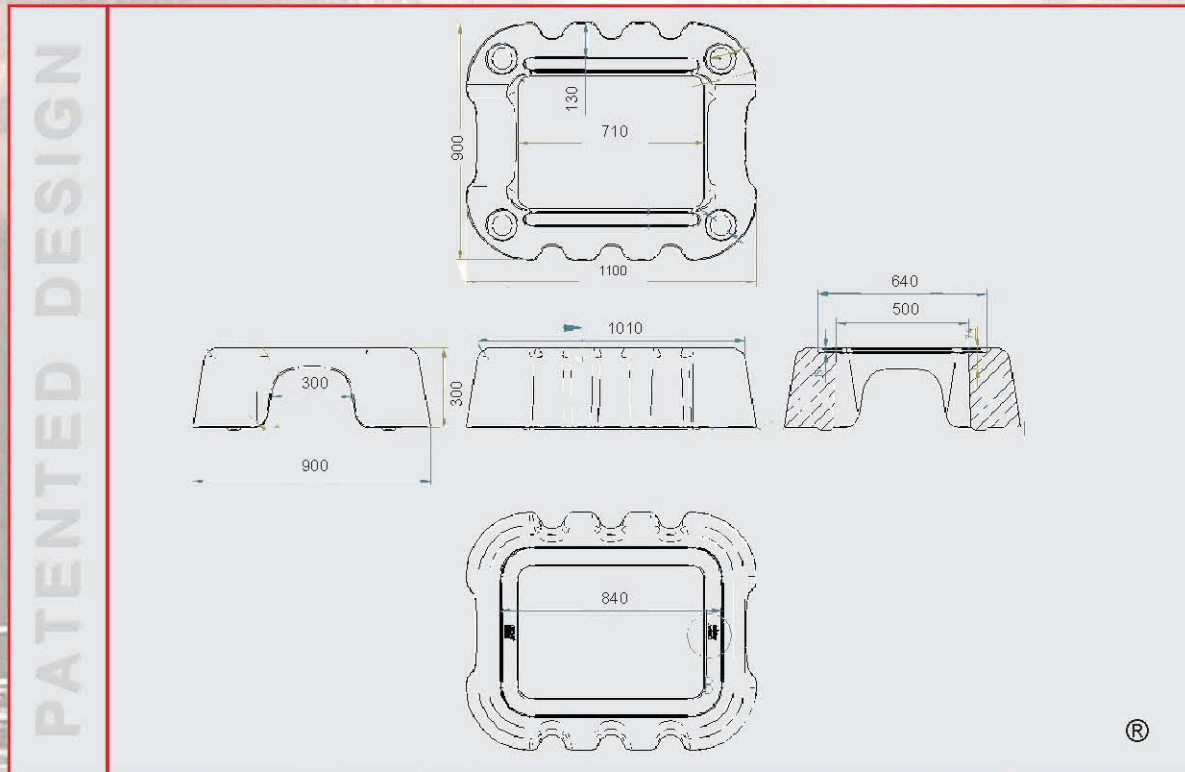
FIXING :

Thanks to the unsinkability, it is possible to put inside the body M8 metallic inserts at any place in the Float set including under the floating line.

On this strong fixed M8 inserts, all kind of fixing system can be screwed : special fixings provided by CE2A or fixings available on the trade market like screwed rods, rails, lift eyebolts, metallic bars, iron cable.



DIMENSIONS :



DURABILITY - WARRANTY :

The CE2A FLOAT SET is 3 years warranty against any manufacturing faults. The durability is estimated at 10 years.

ACCESSORIES :

STANDARD : Each FLOAT SET is delivered with 10 M8 metallic inserts.

OPTIONAL :

- Extra inserts and manual operated tool to fixe yourself the inserts inside the body.
- Special fixing for small engine pumps.
- Fixing in stainless steel : rails, screwed rods, eyebolts, pipe holders, chain, hooks, etc...
- Complete suction piping for engine pumps.
- All kind of delivery hoses for any kind of pumps.
- Iron or stainless steel cable, nylon ropes.



MULTIPURPOSE FLOAT SET