

FLOATING WETLAND

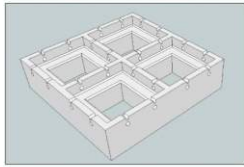
- CITY GARDEN SOLITAIRE WITH WALKWAY (CGS)
- WETLAND MODULE HEX
- CITY WETLAND LINEAR (CWL)
- CITY GARDEN ATTACHE WITH WALKWAY (CGA FWM-120S) / CGA HX-250)
- CITY GARDEN FRAME (CGF)
- CITY GARDEN LINEAR (CGL)
- CUSTOM GARDEN – OVAL (CGO)
- CITY WETLAND SHAPE (CWS)



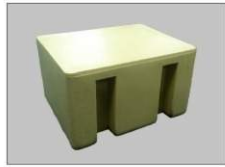
No.16, Jalan Korporat 5/KU9,
Off Persiaran Hamzah Alang,
Taman Perindustrian Meru,
42200 Klang, Selangor.
T: 603-3393 3622 F: 603-3393 3772
Email : superfloats@yahoo.com
Website: www.superfloats.com

FLOATING WETLAND

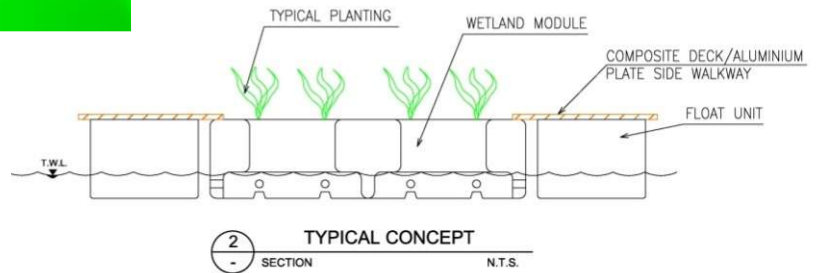
City Garden Solitaire with walkway (CGS)



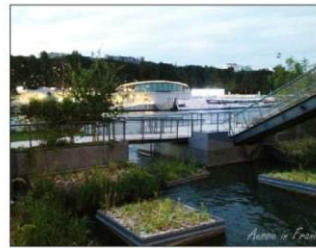
TYPICAL WETLAND MODULE



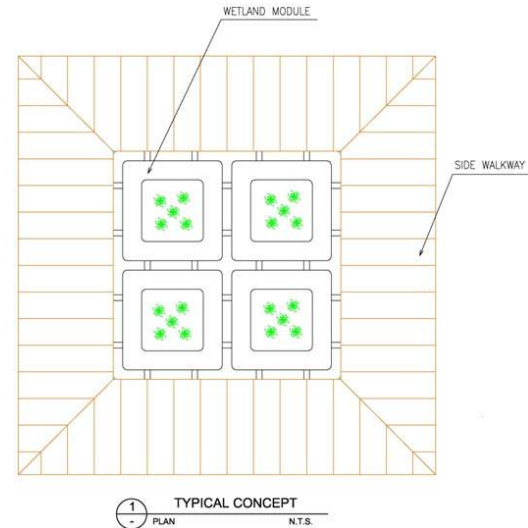
TYPICAL FLOAT UNIT



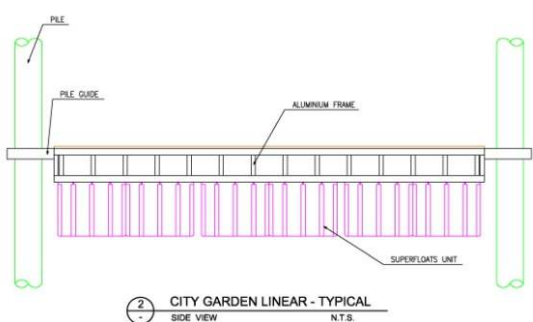
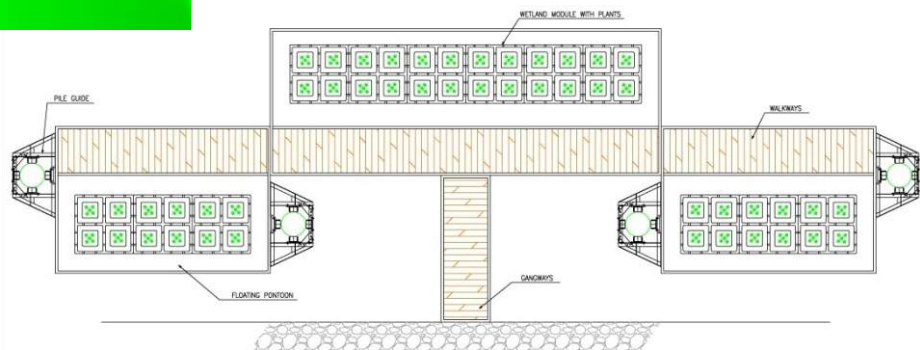
FLOATING WETLAND MODULE PROPERTIES	
MODEL	FWM-120S
DIMENSIONS	1.2M (length) x 1.2M (width) x 0.3M (depth)
LOAD BEARING CAPACITY	50-100 KG/M ²
BOUYANCY CAPACITY	*VARIES*
COLOUR	BLACK OR AS SPECIFIED
MATERIALS	M.D.P.E.
INFILL	P.U.
STRUCTURAL GRID	6MM - 10MM
MOORING METHOD	ELASTIC MOORING WITH CONCRETE SINKER
* ALL DETAILS, INDICATIVES, DIMENSIONS, SIZES & QUANTITIES ARE SUBJECT TO MINOR ADJUSTMENT TO SUIT.	



TYPICAL ARRANGEMENT



City Garden Linear (CGL)



Superfloats EMS, Extendable Mooring Systems is unique such that the rubber elastic rods will stretch and extend its length, thus enable the floating platform i.e. pontoons, buoys or boats to rise or fall in tandem with the tides or waves.



TYPICAL PILE GUIDE

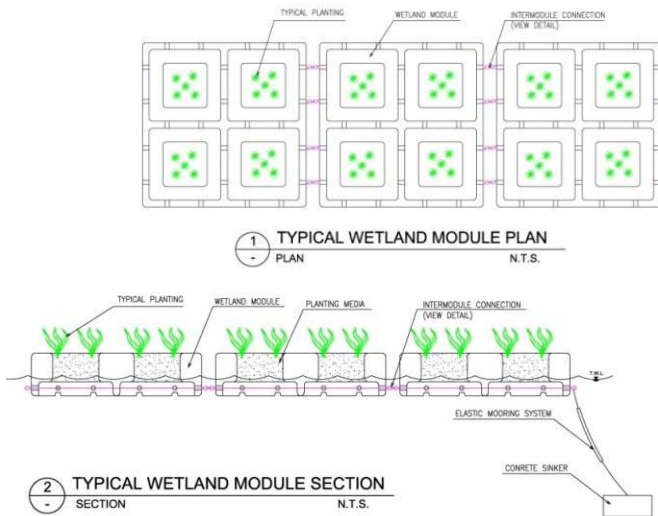


TYPICAL PILE

FLOATING WETLAND MODULE PROPERTIES	
MODEL	FWM-120S
DIMENSIONS	1.2M (length) x 1.2M (width) x 0.3M (depth)
LOAD BEARING CAPACITY	50-100 KG/M ²
BOUYANCY CAPACITY	*VARIES*
COLOUR	BLACK OR AS SPECIFIED
MATERIALS	M.D.P.E.
INFILL	P.U.
MOORING METHOD	PILE / ELASTIC MOORING SYSTEM
* ALL DETAILS, INDICATIVES, DIMENSIONS, SIZES & QUANTITIES ARE SUBJECT TO MINOR ADJUSTMENT TO SUIT.	

FLOATING WETLAND

City Wetland Linear (CWL)



FLOATING WETLAND MODULE PROPERTIES	
MODEL	FWM-120S
DIMENSIONS	1.2M (length) x 1.2M (width) x 0.3M (depth)
LOAD BEARING CAPACITY	50-100 KG/M ²
BOUYANCY CAPACITY	*VARIES*
COLOUR	BLACK OR AS SPECIFIED
MATERIALS	M.D.P.E.
INFILL	P.U.
MOORING METHOD	ELASTIC MOORING WITH CONCRETE SINKER
* ALL DETAILS, INDICATIVES, DIMENSIONS, SIZES & QUANTITIES ARE SUBJECT TO MINOR ADJUSTMENT TO SUIT.	

City Garden Attache with Walkway (CGA FWM-120S) / CGA HX-250

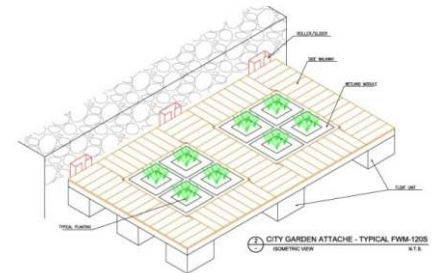
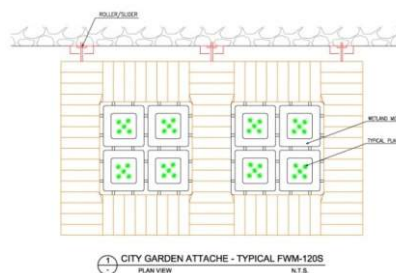
FLOATING WETLAND MODULE PROPERTIES

MODEL	FWM-120S
DIMENSIONS	1.2M (length) x 1.2M (width) x 0.3M (depth)
LOAD BEARING CAPACITY	50-100 KG/M ²
BOUYANCY CAPACITY	*VARIES*
COLOUR	BLACK OR AS SPECIFIED
MATERIALS	M.D.P.E.
INFILL	P.U.
STRUCTURAL GRID	6MM - 10MM
MOORING METHOD	WALL ROLLER / SLIDER

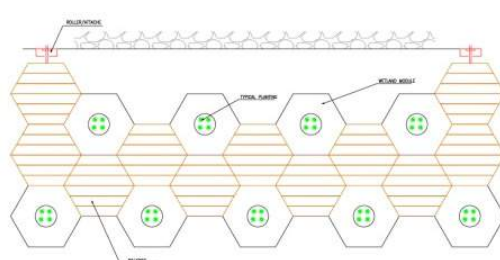
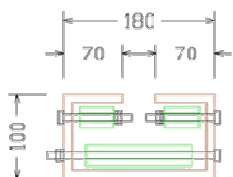
CGA FWM-120A



Superfloats EMS, Extendable Mooring Systems is unique such that the rubber elastic rods will stretch and extend its length, thus enable the floating platform i.e. pontoons, buoys or boats to rise or fall in tandem with the tides or waves.



WALL ROLLER / SLIDER



CITY GARDEN ATTACHE - TYPICAL HX-250
PLAN VIEW N.T.S.

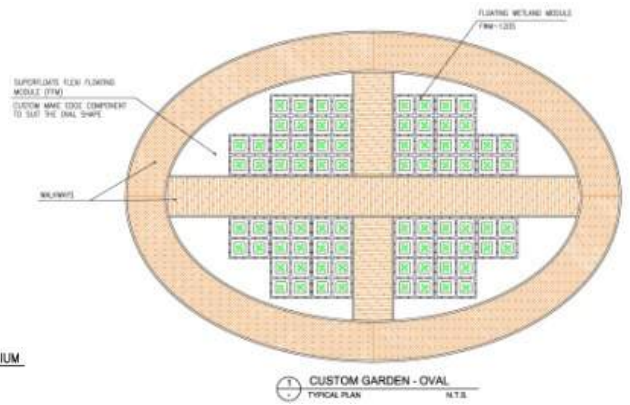
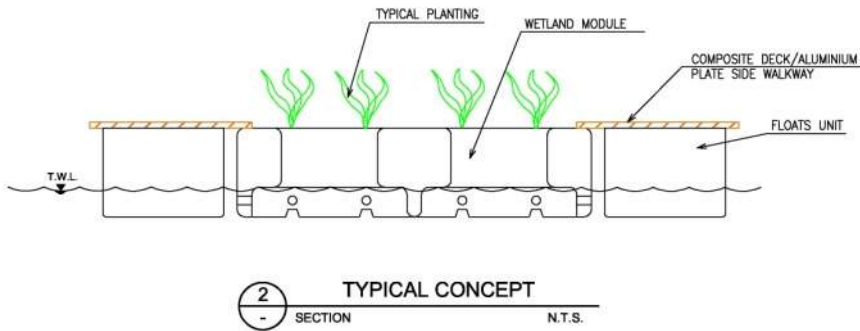
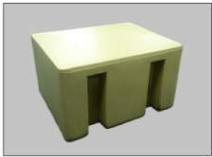
FLOATING WETLAND MODULE PROPERTIES

MODEL	HX-250	HX-400
DIMENSIONS (LxWxD)	0.98M x 0.86M x 0.25M	0.98M x 0.86M x 0.4M
BOUYANCY	150 KG/M²	300 KG/M²
WEIGHT	16 KG	26 KG
COLOUR	BLACK OR AS SPECIFIED	BLACK OR AS SPECIFIED
MATERIALS	M.D.P.E.	M.D.P.E.
INFILL	P.U.	P.U.
MOORING METHOD	WALL SLIDER / ELASTIC MOORING SYSTEM	
* ALL DETAILS, INDICATIVES, DIMENSIONS, SIZES & QUANTITIES ARE SUBJECT TO MINOR ADJUSTMENT TO SUIT.		

CGA HX-250

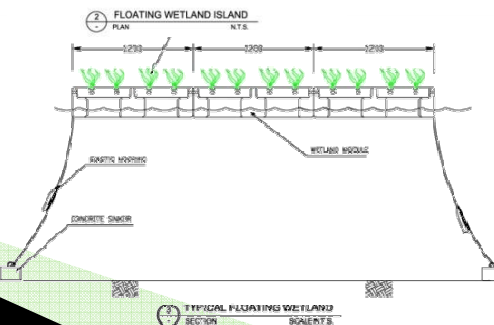
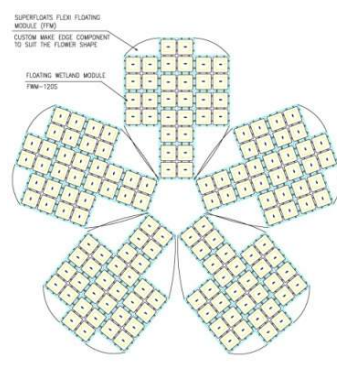
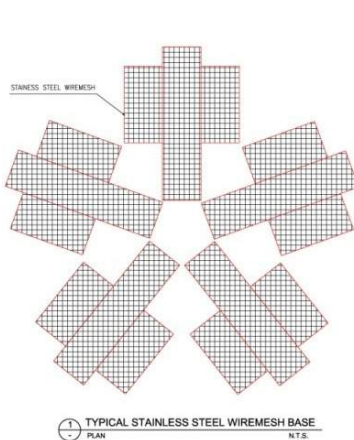
FLOATING WETLAND

Custom Garden – Oval (CGO)



FLOATING WETLAND MODULE PROPERTIES	
MODEL	FWM-120S
DIMENSIONS	1.2M (length) x 1.2M (width) x 0.3M (depth)
LOAD BEARING CAPACITY	50-100 KG/M ²
BOUYANCY CAPACITY	*VARIES*
COLOUR	BLACK OR AS SPECIFIED
MATERIALS	M.D.P.E.
INFILL	P.U.
STRUCTURAL GRID	6MM – 10MM
MOORING METHOD	PILE / ELASTIC MOORING SYSTEM
* ALL DETAILS, INDICATIVES, DIMENSIONS, SIZES & QUANTITIES ARE SUBJECT TO MINOR ADJUSTMENT TO SUIT.	

City Wetland Shape (CWS)



FLOATING WETLAND MODULE PROPERTIES	
MODEL	FWM-120S
DIMENSIONS	1.2M (length) x 1.2M (width) x 0.3M (depth)
LOAD BEARING CAPACITY	50-100 KG/M ²
BOUYANCY CAPACITY	*VARIES*
COLOUR	BLACK OR AS SPECIFIED
MATERIALS	M.D.P.E.
INFILL	P.U.
MOORING METHOD	ELASTIC MOORING WITH CONCRETE SINKER
* ALL DETAILS, INDICATIVES, DIMENSIONS, SIZES & QUANTITIES ARE SUBJECT TO MINOR ADJUSTMENT TO SUIT.	



Superfloats EMS, Extendable Mooring Systems is unique such that the rubber elastic rods will stretch and extend its length, thus enable the floating platform i.e. pontoons, buoys or boats to rise or fall in tandem with the tides or waves.